

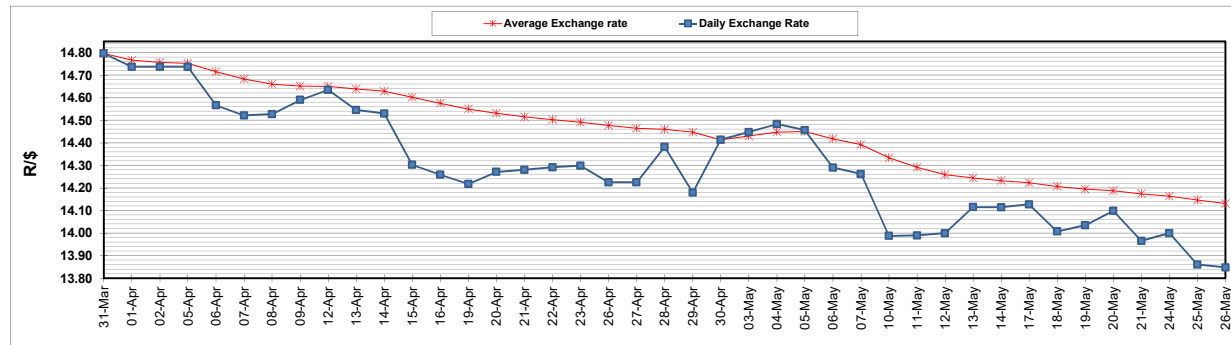
	PETROL 95 ULP	PETROL 93 ULP & LRP	DIESEL 0.05%	DIESEL 0.005%	ILL. PAR.
GAUTENG PUMP PRICE (SA c/l) AS FROM 05/05/2021	1,723.000	1,701.000	-	-	-
WHOLESALE PRICE (SA c/l) AS FROM 05/05/2021	-	-	1,446.620	1,450.020	857.488
SINGLE NATIONAL MAXIMUM RETAIL PRICE	-	-	-	-	1,076.000
BASIC FUEL PRICE - 26/05/2021 (SA c/l)	707.848	697.939	680.719	685.493	659.633
PRESS RELEASE CONTRIBUTION TO BFP 05/05/2021 - 26/05/2021 (SA c/l)	727.170	715.170	659.630	663.030	644.128
UNIT OVER/(UNDER) RECOVERY - 26/05/2021 (SA c/l)	19.322	17.231	(21.089)	(22.463)	(15.505)
AVERAGE BASIC FUEL PRICE 30/04/2021 - 26/05/2021	718.615	708.012	684.078	688.348	669.172
AVERAGE UNIT OVER/(UNDER) RECOVERY 30/04/2021 - 26/05/2021	9.976	8.579	(19.553)	(20.581)	(21.413)

ANALYSIS MOVEMENT OF AVERAGE OVER/(UNDER) RECOVERY

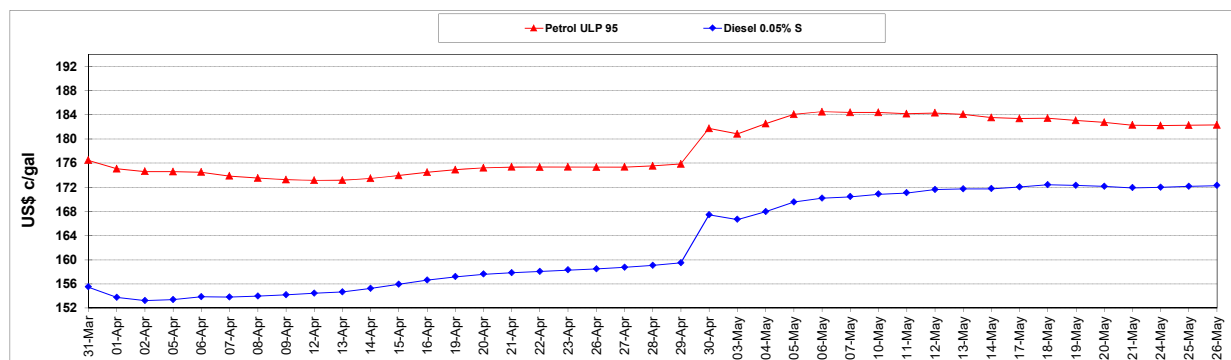
	PETROL 95	PETROL 93	DIESEL 0.05%	DIESEL 0.005%	ILL. PAR.
- MOVEMENT IN INTERNATIONAL PRODUCT PRICES	(6.108)	(7.268)	(34.864)	(35.988)	(36.390)
- MOVEMENT IN EXCHANGE RATE	16.084	15.847	15.311	15.407	14.978
AVERAGE UNIT OVER/(UNDER) RECOVERY 30/04/2021 - 26/05/2021	9.976	8.579	(19.553)	(20.581)	(21.413)

R/\$ EXCHANGE RATE - (R/\$13.8480- 26/05/2021)

EXCHANGE RATE USED IN BASIC FUEL PRICE



INTERNATIONAL PRODUCT PRICES OF BASKET USED IN BASIC FUEL PRICE



BASIC FUEL PRICE IN SA CENTS PER LITRE

